



Pro Tools | Control Guide

and EuControl 3.3.1

Legal Notices

© 2015 Avid Technology, Inc., ("Avid"), all rights reserved. This guide may not be duplicated in whole or in part without the written consent of Avid.

003, 192 Digital I/O, 192 I/O, 96 I/O, 96i I/O, Adrenaline, AirSpeed, ALEX, Alienbrain, AME, AniMatte, Archive, Archive II, Assistant Station, AudioPages, AudioStation, AutoLoop, AutoSync, Avid, Avid Active, Avid Advanced Response, Avid DNA, Avid DNxcel, Avid DNxHD, Avid DS Assist Station, Avid Ignite, Avid Liquid, Avid Media Engine, Avid Media Processor, Avid MEDIArray, Avid Mojo, Avid Remote Response, Avid Unity, Avid Unity ISIS, Avid VideoRAID, AvidRAID, AvidShare, AVIDStripe, AVX, Beat Detective, Beauty Without The Bandwidth, Beyond Reality, BF Essentials, Bomb Factory, Bruno, C|24, CaptureManager, ChromaCurve, ChromaWheel, Cineractive Engine, Cineractive Player, Cineractive Viewer, Color Conductor, Command|8, Control|24, Cosmonaut Voice, Countdown, d2, d3, DAE, D-Command, D-Control, Deko, DekoCast, D-Fi, D-fx, Digi 002, Digi 003, DigiBase, Digidesign, Digidesign Audio Engine, Digidesign Development Partners, Digidesign Intelligent Noise Reduction, Digidesign TDM Bus, DigiLink, DigiMeter, DigiPanner, DigiProNet, DigiRack, DigiSerial, DigiSnake, DigiSystem, Digital Choreography, Digital Nonlinear Accelerator, DigiTest, DigiTranslator, DigiWear, DINR, DNxchange, Do More, DPP-1, D-Show, DSP Manager, DS-StorageCalc, DV Toolkit, DVD Complete, D-Verb, Eleven, EM, Euphonix, EUCON, EveryPhase, Expander, ExpertRender, Fairchild, FastBreak, Fast Track, Film Cutter, FilmScribe, Flexevent, FluidMotion, Frame Chase, FXDeko, HD Core, HD Process, HDpack, Home-to-Hollywood, HyperSPACE, HyperSPACE HDCAM, iKnowledge, Impact, Improv, iNEWS, iNEWS Assign, iNEWS ControlAir, InGame, Instantwrite, Instinct, Intelligent Content Management, Intelligent Digital Actor Technology, IntelliRender, Intelli-Sat, Intelli-Sat Broadcasting Recording Manager, InterFX, Interplay, inTONE, Intraframe, iS Expander, iS9, iS18, iS23, iS36, ISIS, IsoSync, LaunchPad, LeaderPlus, LFX, Lightning, Link & Sync, ListSync, LKT-200, Lo-Fi, MachineControl, Magic Mask, Make Anything Hollywood, make manage move|media, Marquee, MassivePack, MassivePack Pro, Maxim, Mbox, Media Composer, MediaFlow, MediaLog, MediaMix, Media Reader, Media Recorder, MEDIArray, MediaServer, MediaShare, MetaFuze, MetaSync, MIDI I/O, Mix Rack, Moviestar, MultiShell, NaturalMatch, NewsCutter, NewsView, NewsVision, Nitris, NL3D, NLP, NSDOS, NSWIN, OMF, OMF Interchange, OMM, OnDVD, Open Media Framework, Open Media Management, Painterly Effects, Palladium, Personal Q, PET, Podcast Factory, PowerSwap, PRE, ProControl, ProEncode, Profiler, Pro Tools, Pro Tools|HD, Pro Tools LE, Pro Tools M-Powered, Pro Transfer, QuickPunch, QuietDrive, Realtime Motion Synthesis, Recti-Fi, Reel Tape Delay, Reel Tape Flanger, Reel Tape Saturation, Reprise, Res Rocket Surfer, Reso, RetroLoop, Reverb One, ReVibe, Revolution, rS9, rS18, RTAS, Salesview, Sci-Fi, Scorch, ScriptSync, SecureProductionEnvironment, Shape-to-Shape, ShuttleCase, Sibelius, SimulPlay, SimulRecord, Slightly Rude Compressor, Smack!, Soft SampleCell, Soft-Clip Limiter, SoundReplacer, SPACE, SPACEShift, SpectraGraph, SpectraMatte, SteadyGlide, Streamfactory, Streamgenie, StreamRAID, SubCap, Sundance, Sundance Digital, SurroundScope, Symphony, SYNC HD, SYNC I/O, Synchronic, SynchroScope, Syntax, TDM FlexCable, TechFlix, Tel-Ray, Thunder, TimeLiner, Titansync, Titan, TL Aggro, TL AutoPan, TL Drum Rehab, TL Everyphase, TL Fauxlder, TL In Tune, TL MasterMeter, TL Metro, TL Space, TL Utilities, tools for storytellers, Transit, TransJammer, Trillium Lane Labs, TruTouch, UnityRAID, Vari-Fi, Video the Web Way, VideoRAID, VideoSPACE, VTEM, Work-N-Play, Xdeck, X-Form, and XMON are either registered trademarks or trademarks of Avid Technology, Inc. in the United States and/or other countries.

Bonjour, the Bonjour logo, and the Bonjour symbol are trademarks of Apple Computer, Inc.

Thunderbolt and the Thunderbolt logo are trademarks of Intel Corporation in the U.S. and/or other countries.

This product may be protected by one or more U.S. and non-U.S. patents. Details are available at www.avid.com/patents.

Product features, specifications, system requirements, and availability are subject to change without notice.

Guide Part Number 9329-65638-00 REV A 9/15

Contents

- Introduction** 1
 - What's Included 1
 - Additional Required Equipment 1
 - System Requirements and Compatibility 1
 - About This Guide 2
 - Conventions Used in This Guide 2
 - Resources 2
- Installation and Setup** 3
 - Installing Pro Tools | Control 3
 - Installing EuControl Software 3
 - Configuring Your Network 4
 - Enabling EUCON in Pro Tools 6
 - Confirming EUCON 7
 - Connecting a Second Workstation 8
 - Troubleshooting EuControl Connections 9
 - Optimizing EuControl After a Pro Tools Update 10
- Pro Tools | Control Overview** 11
 - Mixer View 11
 - Tracks View 12
 - Tab Bar 13
 - Toolbar 14
- Using Pro Tools | Control** 16
 - Banking Tracks 16
 - Selecting Tracks 17
 - Adjusting Track Volume and Pan 18
 - Recording Tracks 19
 - Customizing Soft Keys 21
 - Managing Layouts 25
- EuControl** 26
 - Surfaces 26
 - Workstations 28
 - General 29
 - Preferences 31
 - Assign 32
 - Layouts 33
 - Soft Keys 33
 - Restart EUCON Applications 33

Introduction

Welcome to the Pro Tools®| Control iPad app for iOS. The Control app lets you control Pro Tools or other EUCON™-aware media applications on your workstation computer from a qualified Apple iPad via Wi-Fi and EuControl software. You can use the Control app standalone, or in combination with Avid media controllers such as Pro Tools | S3 and Artist Series devices.

Control App

The Control app features two screens (Mixer and Tracks), letting you control a variety of your media application's parameters such as channel levels, solo, mute, transport controls, and automation modes.

EuControl Software

EuControl links your workstation computer to the Control app and other Avid media controllers via the EUCON protocol. You can also use the EuControl software to customize the Soft Keys on the Control app and other Avid media controllers. EuControl software must be installed on the workstation computer before you can use the Control app with your media application. You can also control applications on a secondary workstation computer by installing EUCON Workstation software.

What's Included

- Control app (installed on a qualified iPad)
- EuControl software (installed on a qualified Mac or Windows workstation computer)

Additional Required Equipment

- A wireless router (routers supporting 802.11n at 5 GHz are recommended)

System Requirements and Compatibility

One qualified iPad with the Control app installed can be used with a single instance of EuControl to control one EUCON-aware media application at a time. The Control app can be used standalone, or in conjunction with the following Avid media controllers:

- One S3 control surface and/or one Artist Transport
- Up to four Artist Mix controllers
- One Artist Color
- Support for EUCON Workstation (for controlling a second workstation)

Avid can only assure compatibility and provide support for hardware and software it has tested and approved. For a list of qualified iPads and workstation computers, as well as supported third-party EUCON-aware applications, visit:

www.avid.com/Pro-Tools-Control-Support


About This Guide


This guide covers using the Control app with Pro Tools and other EUCON-aware applications.

Conventions Used in This Guide


The names of Commands, Options, and Settings that appear on-screen are in a different font.

The following symbols are used to highlight important information:

 *User Tips are helpful hints for getting the most from your system.*

 *Important Notices include information that could affect your data or the performance of your system.*

 *Shortcuts show you useful keyboard or mouse shortcuts.*

 *Cross References point to related sections in this guide and other Avid guides.*

How to Use this PDF Guide

These are some useful features of this PDF:

- The Bookmarks on the left serve as a continuously visible table of contents. Click a + symbol to expand that heading to show subheadings. Click the – symbol to collapse a subheading. Click on a subject heading to jump to that page.
- The Table of Contents provides active links to their pages. Select the hand cursor, allow it to hover over the heading until it turns into a finger. Then click to locate to that subject and page.
- Any text entry in **blue** is an active link. Click on the link to go to that section.
- Select Find from the Edit menu to search for a subject.

Resources

The Avid website (www.avid.com) is your best online source for information to help you get the most out of your Avid system. The following are just a few of the services and features available.

Account Activation and Product Registration

Activate your product to access downloads in your Avid account (or quickly create an account if you don't have one). Register your purchase online, download software, updates, documentation, and other resources.

<https://www.avid.com/US/account>

Support and Downloads

Contact Avid Customer Success (technical support); download software updates and the latest online manuals; browse the Compatibility documents for system requirements; search the online Knowledge Base or join the worldwide Avid user community on the User Conference.

<https://www.avid.com/US/Support/index.html>

<https://euphonix.avid.com/artist/ux/euphonix/artist-support.html>

Products and Developers

Learn about Avid products; download demo software or learn about our Development Partners and their plug-ins, applications, and hardware.

<https://www.avid.com/US/Products/index.html>

Installation and Setup

To get started using the Control app, install the Control app and EuControl software, configure your network, then enable and confirm connections.

Installing Pro Tools | Control

To install the Pro Tools | Control app:

- 1 On your iPad, open the App Store.
- 2 In the Search box, enter “Pro Tools Control,” then tap Search.
- 3 Locate the app on-screen, tap Get, then tap Install.
- 4 When installation is complete, tap Open.
- 5 Follow the on-screen instructions to complete the registration process and log in to your Master Avid account (required for obtaining EuControl software).

💡 If you do not have an account, you can create one for free.

Installing EuControl Software

Next, install EuControl software on the computer running your media applications, such as Pro Tools. The computer running media applications is referred to in this guide as a *workstation*. An Internet connection is required to download EuControl.

⚠️ *Make sure to install the latest version of EuControl software. If EuControl software is already installed on your workstation, installing the latest version replaces the currently installed version.*

To install EuControl software:

- 1 Once you have registered using the Control app, on your workstation visit www.avid.com/account and log into your Avid account to download the EuControl installer for your workstation’s operating system (Mac or Windows).
- 2 When download is complete, locate the EuControl installer on your computer and double-click it to mount it (DMG on Mac) or uncompress it (ZIP for Windows).
- 3 In the resulting folder, locate and double-click the Install_EuControl file.
- 4 Follow the on-screen instructions to complete the installation.
- 5 When installation is complete, click Quit (Mac) or Finish (Windows). EuControl software on your computer launches automatically and is running when its icon (which is unlit until the Control app is connected) appears in the Menu bar (Mac) or the System tray (Windows).

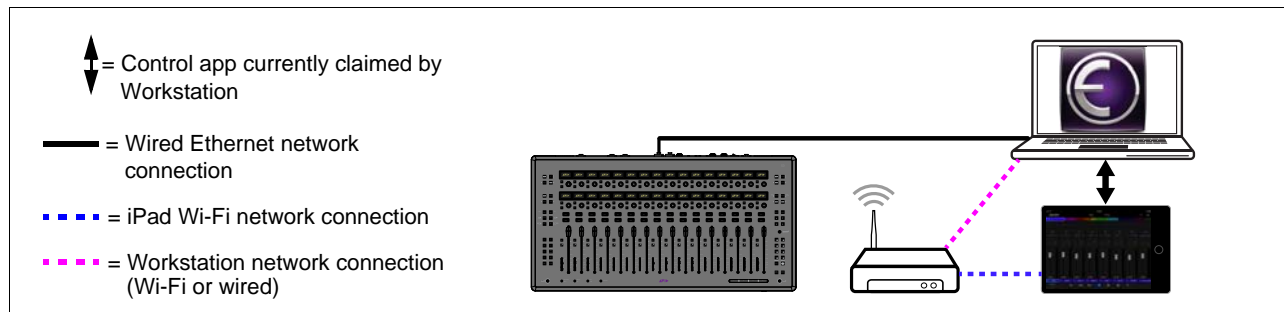


Unlit EuControl icons on Mac (left) and Windows (right)

- 6 Proceed to [Configuring Your Network](#).

Configuring Your Network

After installing the Control app on your iPad, configure your network. In a basic single-user configuration, you can control Pro Tools or other media applications running on a single (primary) workstation computer with the Control app. You can also use an Avid media controller such as Pro Tools | S3 in conjunction with the Control app and control the media application from both devices.



Basic single-user configuration

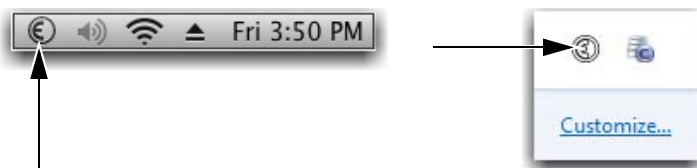
To configure your network:

- 1 If you are using the Control app without an Avid media controller, skip to step 2. If you are using an Avid media controller such as a Pro Tools | S3 control surface, do the following:
 - Make sure the controller is physically connected (using Ethernet cables) to the workstation computer either directly or via a network switch or router.
 - Power on any Avid media controllers.
- 2 Power on your workstation.
- 3 On your iPad, tap **Settings**, then tap **Wi-Fi**. If necessary, enable Wi-Fi and connect to your preferred network.
- 4 Establish a network connection between your workstation and the same network the iPad is connected to via Wi-Fi or a wired Ethernet connection.
- 5 On your iPad, tap the Pro Tools | Control icon to launch the app.



Pro Tools | Control icon

A successful connection between the Control app and your workstation computer is indicated by a lit EuControl in the Menu bar (Mac) or the System tray (Windows).



Lit EuControl icons on Mac (left) and Windows (right)

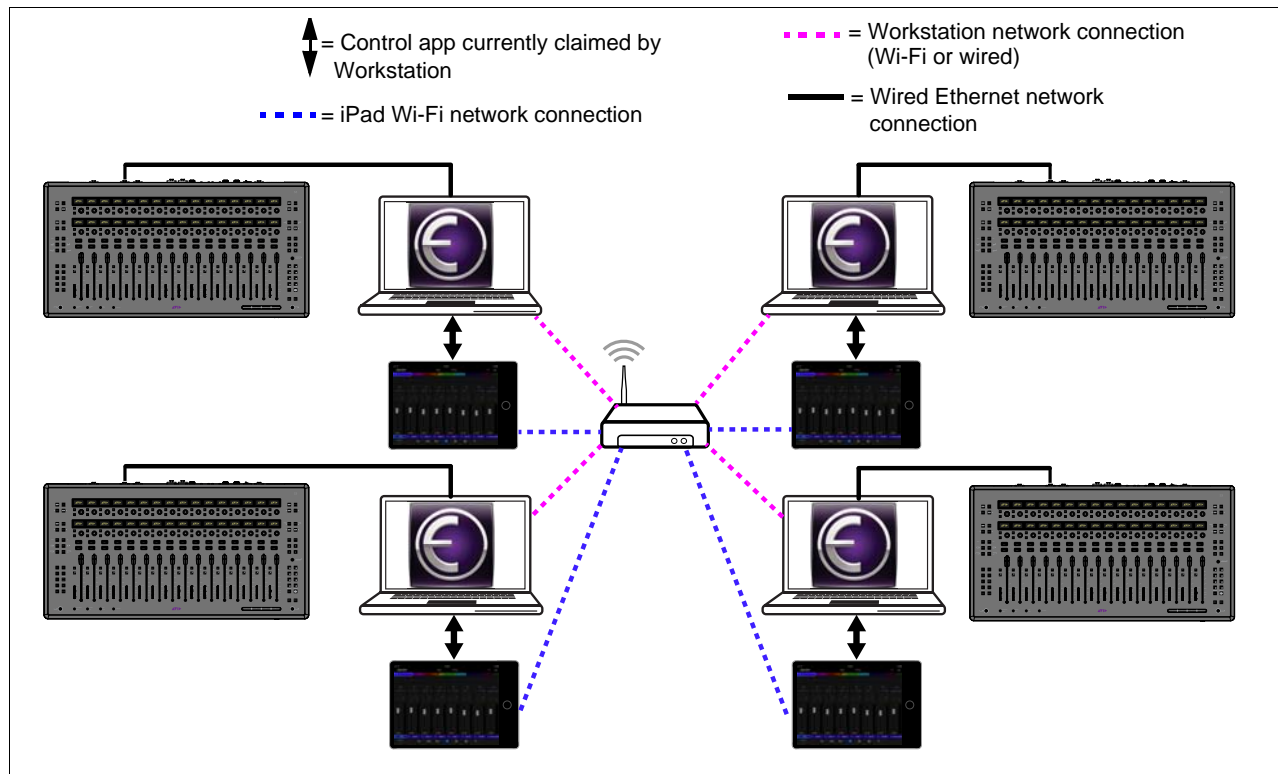
⚠ If a lit EuControl icon does not appear, or the “EUCON Network Not Found” dialog appears proceed to [Troubleshooting EuControl Connections](#).

- 6 Proceed to [Enabling EUCON in Pro Tools](#).

Using the App in Multi-User Environments

The Control app can also be used in multi-user environments such as educational settings, in which multiple workstations are all connected to the same network. Workstations can be connected to the network via Wi-Fi or wired Ethernet connections. A single instance of the Control app can be connected to any other workstation in the network running EuControl software using the EuControl Settings > Surfaces tab (see [Surfaces](#) for more information).

Avid media controllers can also be used in these configurations, and must be connected to a workstation directly or via a router or switch.




Example of a multi-user environment

💡 The Control app also supports configurations with secondary workstations. See [Connecting a Second Workstation](#).

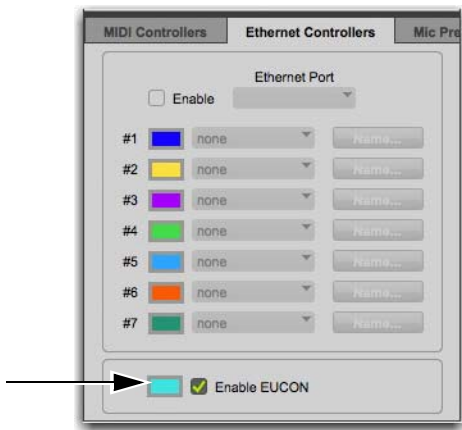
Enabling EUCON in Pro Tools

To use the Control app or other controller with Pro Tools, you must enable EUCON in Pro Tools. EUCON subsequently remains enabled in Pro Tools unless you disable it.

 To enable EUCON in applications other than Pro Tools, see the documentation provided by the manufacturer or visit http://avid.force.com/pkb/articles/how_to/EuControl-3P-Setup for links to the relevant websites.

To enable EuControl in Pro Tools:

- 1 Launch Pro Tools. If the Dashboard (Pro Tools 12 or later) or Quick Start dialog (Pro Tools 11.x and earlier) appears, close it.
- 2 Choose Setup > Peripherals, and click the Ethernet Controllers tab.
- 3 Select Enable EUCON.



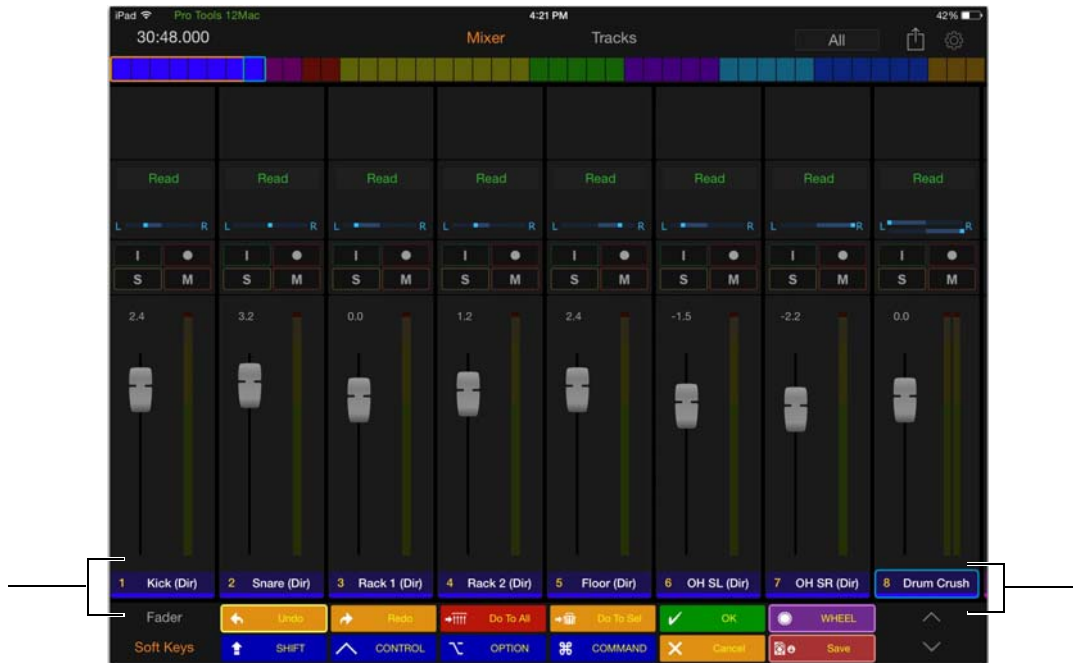
Enable EUCON check box

- 4 Click OK. You do not need to configure any other Ethernet Controllers settings.
Pro Tools scans your system until it identifies attached EUCON-compatible controller. When Pro Tools finishes scanning your system, your controllers are ready to use with Pro Tools.
- 5 Proceed to **Confirming EUCON**.

Confirming EUCON

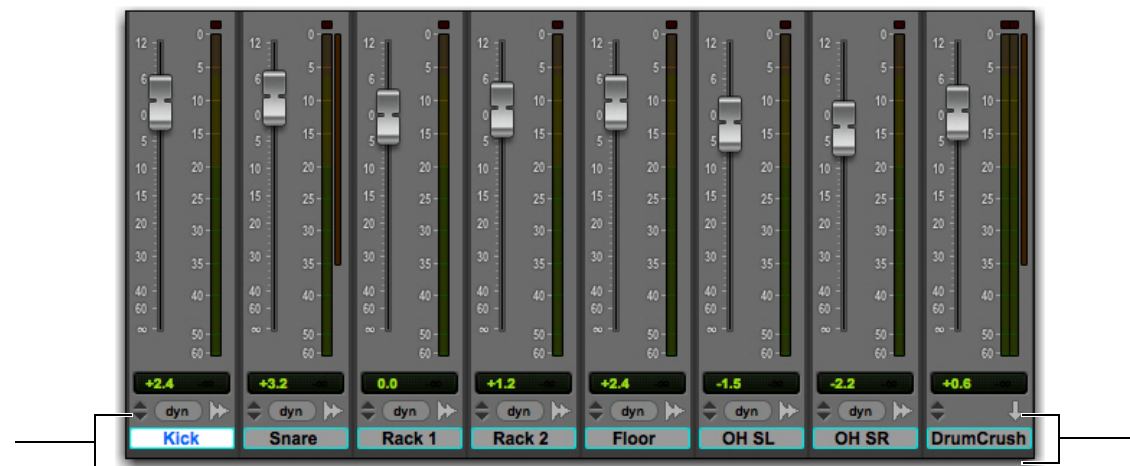
To confirm installation and communication:

- 1 Launch the Control app on your iPad.
- 2 In Pro Tools, make sure you have enabled EUCON and opened a session if one is not already open.
- 3 On your iPad, verify that the track names for the first eight tracks of the current the Pro Tools session are shown below the faders in the Mixer view of the Control app.



Mixer view showing the track names

- 4 In the Pro Tools Mix or Edit window, verify that the names of the tracks shown in the Control app are outlined with blue-green borders.



Pro Tools Mix window showing tracks currently banked to the Control app faders

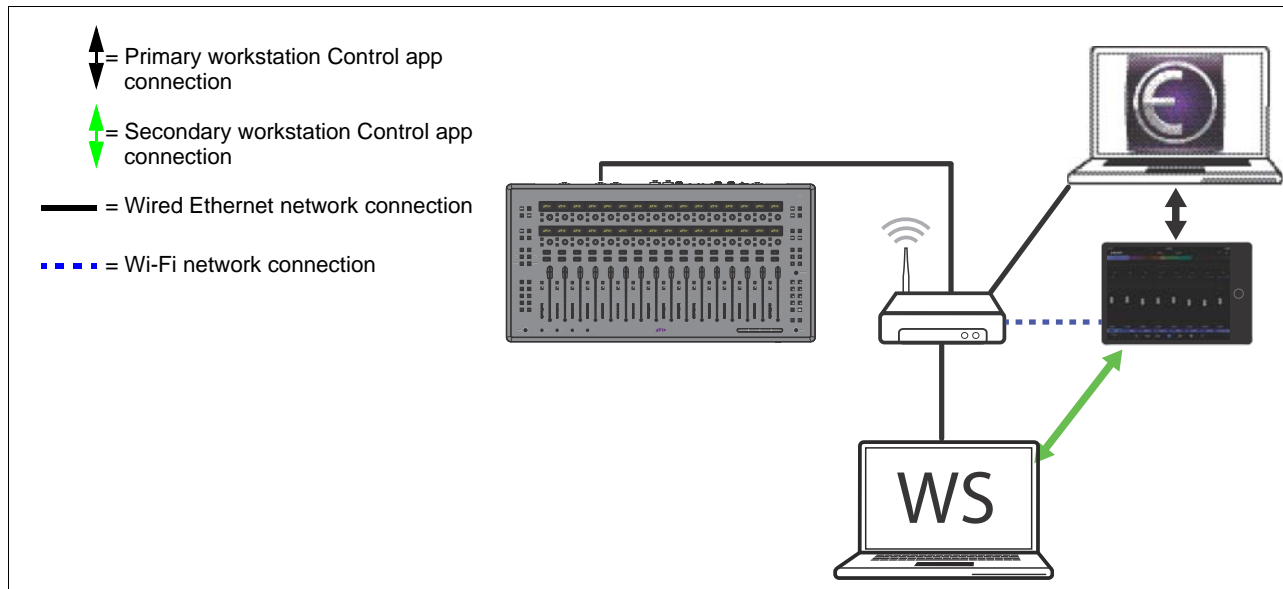
- 5 Proceed to either of the following:
 - For an overview of the Control app, see [Pro Tools | Control Overview](#).
 - For instructions on using the Control app with Pro Tools and other EUCON-aware media applications, see [Using Pro Tools | Control](#).

Connecting a Second Workstation

The Control app can control applications running on a second workstation. The Control app targets the workstation currently attached in the EuControl Settings > Workstations tab. When using a secondary workstation, wired Ethernet connections between both workstations and the router are required.

💡 If EuControl is running on the same workstation as all your audio/video applications, you can skip these instructions.

💡 You can toggle between two workstations using the Workstation/Application switch on Avid media controllers such as S3 and Artist Mix. When using the Control app with an Avid media controller, the Control app targets the same workstation as the controller.



Example of a two-workstation configuration

To be able to control a second workstation:

- 1 Transfer the EuControl installer onto the second computer. After downloading, make sure the installer is mounted (DMG on Mac) or uncompressed (ZIP for Windows).
- 2 In the Extras folder, double-click the Install EuCon Workstation (Mac) installer and follow the instructions to install the EuControl Workstation software.
- 3 When installation has finished, go to Spotlight (Mac) or Search (Windows), and type “MC Client” to locate the application.
- 4 Launch MC Client to enable control of the secondary workstation.
- 5 On the primary workstation, go to System Preferences > EUCON (Mac) or Control Panel > EUCON (Windows), click the Network Interface pop-up menu and choose **Ethernet**.
- 6 Proceed to [Workstations](#) for more instructions on attaching and detaching workstations in EuControl software.

Troubleshooting EuControl Connections

This section provides troubleshooting for EuControl connection issues.

“EUCON Network Not Found” Dialog

If the “EUCON Network Not Found” dialog appears when launching EuControl software, you must select the correct Network Interface in the EUCON Preferences (Mac) or EUCON Control Panel (Windows).

To select the correct Network Interface for EuControl:

1 Do one of the following depending on your workstation computer’s operating system:

Mac Go to System Preferences and select EUCON.

Windows Go to the Control Panel and select EUCON.

2 From the Network Interface (Mac) or the Select Network Interface (Windows) pop-up menu, select one of the following depending on your configuration:

Wi-Fi When using the Control app standalone (not in conjunction with another Avid media controller).

Ethernet When using the Control app in the following configurations:

- Your workstation computer is connected directly to an Avid media controller such as S3.
- Your workstation computer is connected to a router or switch.
- Your configuration includes a second workstation with EUCON Workstation software installed.

3 In the “EUCON Network Not Found” dialog, choose “Restart EUCON”

4 If you chose Quit in the “EUCON Network Not Found” dialog, relaunch EuControl by typing “EuControl” into Spotlight Search (Mac) or the Start Menu Search box (Windows), then choose EuControl.

Unlit EuControl Icon

If a lit EuControl icon does not appear when EuControl launches, do any of the following:

- See [Add](#) to add the Control app manually.
- Click the EuControl icon in the menu bar (Mac) or right-click the choose Restart EUCON Applications (see [Restart EUCON Applications](#) for more information).
- Shut down the iPad and your computer, then turn them on (iPad first, then the workstation computer).
- See www.avid.com/Pro-Tools-Control-Support for the most current troubleshooting information.

Optimizing EuControl After a Pro Tools Update

If you have recently updated Pro Tools (for example, from Pro Tools 11.3.1 to Pro Tools 12.x) and were using Avid media controllers such as S3 or other Artist series devices with the previous version of Pro Tools, perform the tasks in this section to make sure you get the latest Appset functionality when using with Pro Tools.

To optimize EuControl after an update:

- 1 On your computer, go to the following locations:
 - On Mac, go to: /Library/Application Support/Euphonix/UserSets/MC2User/MC_USER_SET_Root
 - On Windows, make sure “Show hidden files and folders” is enabled, and go to:
C:\Users\<enter your username here>\AppData\Roaming\Euphonix\UserSets\MC2User\MC_USER_SET_Root\
- 2 If an XML file is located in this folder, do one of the following:
 - If you did not modify the XML file, move the file to the Trash (Mac) or delete it (Windows).
 - If you modified XML file and want to retain the edits, move the file to a different location.
- 3 On your computer, go to the following locations:
 - On Mac, go to: /Library/Application Support/Euphonix/DYN_APPSETS
 - On Windows, make sure “Show hidden files and folders” is enabled, and go to:
C:\Users\<enter your username here>\AppData\Roaming\Euphonix\DYN_APPSETS
- 4 Locate the file called Pro Tools xxMac.xml, and move the file to the Trash (Mac) or delete it (Windows).
- 5 In Pro Tools, do the following:
 - Go to **Setup > Peripherals** and click the Ethernet Controllers tab.
 - Disable **Enable EUCON**.
 - Re-enable **Enable EUCON**, making sure it is enabled before you close this window.



Visit www.avid.com/Pro-Tools-Control-Support to download a custom Appset for the Control app.

Pro Tools | Control Overview

This section provides an overview of the Control app's views, controls, and indicators. Pro Tools | Control provides two primary views, the **Mixer View** and the **Tracks View**. In both views, the **Tab Bar** (across the top of the screen) and the **Toolbar** (across the bottom of the screen) are always visible and accessible.

 See [Using Pro Tools | Control](#) for information on using the app.

Mixer View

The Mixer view provides faders and associated controls in banks of eight tracks, letting you control track level and other parameters. Tracks are oriented horizontally, so the leftmost track (Track 1) is the first track of the current session on your workstation.

To access additional tracks:

- Swipe to the left to access higher-numbered tracks, or to the right for lower-numbered tracks.

The Mixer view provides virtual fader strips for tracks in the current session on your workstation computer. Each fader strip provides the following controls:

1 – Track Number and Name

The track as named in the application and the track number are shown.

2 – Fader

The fader adjusts the level for the track. Double-tap the fader cap to reset the fader level to 0 dB.

3 – Input Monitor, Record, Solo, and Mute Buttons

These buttons let you enable input monitoring (Pro Tools HD software only), record, solo, and mute for the corresponding track.

4 – Pan Indicator

This indicator shows track pan. Tap the Pan indicator to access to the Pan Control pop-up, which provides the pan controls. A single control appears for mono tracks, and dual controls appear for stereo tracks. Double-tapping a pan slider to reset the pan position to default.

5– Automation Mode Indicator

This indicator shows the current automation mode for the track. Tap the indicator to choose a different automation mode from the pop-up. Available choices depend on the application you are using.



Mixer view fader strip

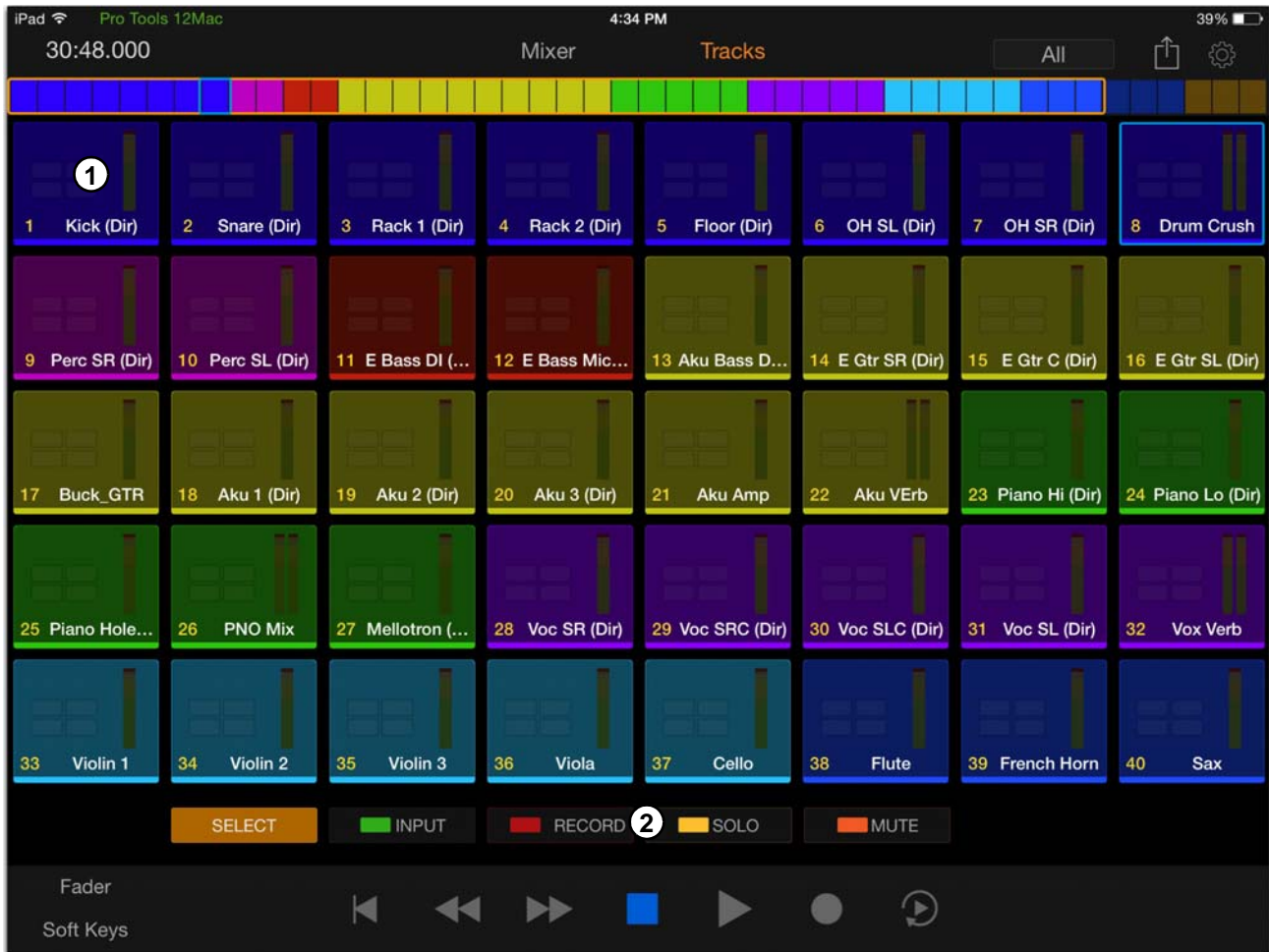
Tracks View

The Tracks view displays a bank of up to 40 track tiles in five rows. You can select tracks, and enable or disable track input monitoring, record, solo, and mute.

To access additional a tracks:

- Swipe up to access higher-numbered tracks, or down to access lower-numbered tracks.

💡 You can also use the [Universe Scroller](#) to access tracks.



Tracks view

The Tracks view provides the following controls and indicators:

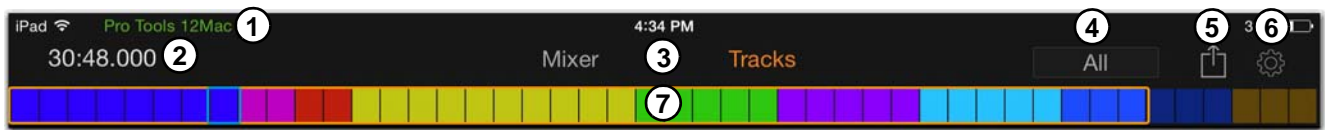
1 – Track Tile

Each track in the session has a track tile that shows the track's number and name, as well as its current Input Monitoring, record, mute and solo status. A level meter is also provided. Tapping a track tile engages the currently selected track function for that track, as determined by the Track Function buttons.

2 – Track Function Buttons

Tapping a Track Function button (Select, Input, Record, Solo, Mute) selects that function. When a function is selected, tapping a track tile engages that function for that track. One track function can be active at a time. Double-tapping a tile will clear the currently selected function. For example, if multiple tracks are soloed, double-tapping a soloed tile clears all solos.


Tab Bar



Tab bar

1 – Focused Application

The Control app shows the name of the currently focused application in green (such as Pro Tools 12Mac). If the Control app is not connected to EuControl software on your workstation, Not Connected is shown in red.

 If *Not Connected* is shown, make sure the iPad and the workstation are connected to the same network. See [Troubleshooting EuControl Connections](#) for more information.

2 – Counter

The Counter shows the Main Counter (default) or the Sub Counter for the current session. Tap the Counter to toggle between them.

3 – View Buttons


Tapping one of the View buttons displays the Mixer or Tracks view.

4 – Track Type and Layouts Button

The Track Type and Layouts button lets you filter the types of tracks shown on-screen. You can choose between track types available in the focused application (such as audio tracks, Aux Inputs, and MIDI tracks). You can also recall custom fader Layouts created with a Pro Tools | S3 or Artist Mix.

To filter the types of channels show on-screen:

- 1 Tap the Track Type button.
- 2 To filter Track Types, do the following:
 - Tap TrackTypes.
 - Tap the button of one or more available track types from the menu. A button is lit orange when that track type is active.
 - Tap All to view all tracks.
- 3 To filter Layouts, tap Layouts, then chose a Layout from the menu if available.

 See [Managing Layouts](#) for more information on working with Layouts in the Control app.

5 – Settings (Gear Icon)

The Setting button lets you access the Settings window. The Settings shown include the following:

App Banks DAW When enabled (lit orange), forces tracks in the currently focused DAW to follow Control app banking.

Focused Application Shows the Control app's currently focused application.

Get Help Provides links to help resources such as the Avid Knowledge Base.

6 – Share Button

The Share button lets you share the Pro Tools | Control app with others via email, Facebook, Twitter, and other social media outlets.

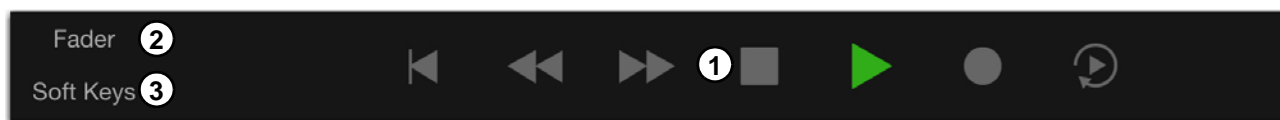
7 – Universe Scroller

The Universe Scroller lets you quickly access tracks in both views. The Universe Scroller is composed of individual rectangles, each representing a track in the current session. The yellow outline indicates the tracks currently shown on-screen; the blue outline indicates the currently selected track.

To access tracks using the Universe bar:

- Swipe the Universe Scroller left or right until the tracks you want to access appear on-screen.
 - or –
- Tap a track in the Universe bar to jump to that bank of tracks. In Mixer view, the track you tapped appears on the leftmost fader, and the next seven tracks appear to the right of that track.

Toolbar



Toolbar (Transport shown)

1 – Transport/Soft Keys

Transport

To access the Transport controls:

- Tap Soft Keys so it is unlit. Transport controls appear in the Toolbar, as follows:
 - Return to Zero
 - Rewind
 - Fast Forward
 - Stop
 - Play
 - Record Arm
 - Loop Playback on/off

Soft Keys

Soft Keys provide shortcuts to many of your media application's functions. The Control app provides default Soft Key assignments when used with Pro Tools or other EUCON-aware applications. Each page of Soft Keys provides 12 Soft Keys slots. Using the Soft Key Editor provided within the EuControl software, you can customize the default Soft Key assignments, or you can populate the remaining available pages of Soft Keys with custom assignments. See [Customizing Soft Keys](#) for more information.

To access the Soft Keys:

- 1 Tap Soft Keys so it is lit orange. The first page of Soft Keys appear in the Toolbar.



Soft Keys

- 2 Do any of the following:

- Tap a Soft Key to trigger the function as labeled on the Soft Key. For example, the Soft Key labeled OK mirrors the function of the Enter key on your keyboard.
- To the right of the Soft Keys, tap the Up arrow to advance to the next page of Soft Keys.
- Tap the Down arrow to go to the previous page of Soft Keys.

 You can edit existing default Soft Key assignments and create your own. See [Customizing Soft Keys](#) for more information.

2 – Fader Button (Tracks View Only)

The Fader button lets you access a fader for the selected channel in Tracks view.

To access a fader in Tracks view:

- 1 Tap Fader. A fader and associated controls appear for the currently selected channel.
- 2 Adjust track parameters as desired.

To move the fader position on-screen:

- 1 Touch and hold on the track name, then drag the fader to the desired location.
- 2 Tap the track name again to fix fader in the new position.

To dismiss the fader:

- Press Fader again. The fader disappears.

3 – Soft Keys Show/Hide

This button shows or hides the Soft Keys. Tapping Soft Keys so it is lit orange shows the Soft Keys. When unlit, the Transport is shown.

Using Pro Tools | Control

The workflows in this section show how to use the Control app specifically with Pro Tools. They also apply to most other EUCON-aware applications.

Banking Tracks

The Mixer view shows up to eight tracks at a time, and the Tracks view shows up to 40 tracks. In both views you can display additional tracks by swiping the screen or using the Universe Scroller.



When using the Control app with an Avid media controller like S3, tracks are banked to each device independently. For example, if the S3 is banked to tracks 1–16 and you bank the Control app from tracks 1-8 to tracks 17-24, the S3 remains banked to tracks 1-16.

To bank tracks in Mixer view:

- 1 If necessary, tap Mixer.
- 2 Swipe horizontally in the fader area to bank other channels.

In Pro Tools, the names of the tracks currently banked to the faders in the Mixer view are outlined with blue-green borders.

To bank tracks in Tracks view:

- 1 If necessary, tap Tracks.
- 2 Swipe vertically in the track tiles area to bank other tracks.

To bank tracks using the Universe Scroller:

- Tap the Universe Scroller and slide horizontally until the desired tracks are shown.
 - or –
- Tap anywhere in the Universe Scroller.
 - In Mixer view, the tapped track is assigned to the leftmost fader.
 - In Tracks view, the tapped track is assigned to the top-leftmost track tile.

Selecting Tracks

You can select and *attention* tracks in both the Mixer and Tracks views. When using the Control app with an Avid media controller like S3, tracks selected/attentioned from any surface are selected/attentioned on all attached surfaces.



In Pro Tools and other applications, multiple tracks can be selected, but only one channel can be attentioned. When selecting multiple tracks, the attentioned track is the last one selected.

To select and attention a track in Mixer view:

- Tap the track name under the fader for the desired track. A blue rectangle surrounds the selected track's fader strip, and surrounds the selected track in the Universe Scroller.



*You can also select/attention a track by touching a fader by enabling **Select by Touch** in the EuControl software.*

To select a track in Tracks view:

- 1 Tap Select in the Toolbar.
- 2 Tap the desired track tile. A blue rectangle surrounds the track tile, and surrounds the selected track in the Universe Scroller.

To select a range of tracks (multi-select) (Pro Tools only):

- 1 Select a track.
- 2 Tap and hold a different track. All tracks between the two are selected.
– or –
- 1 Select a track.
- 2 Tap Soft Keys so it is lit to show the Soft Keys.
- 3 Navigate to the first page of Soft Keys by tapping Prev until the Shift Soft Key is displayed.
- 4 Tap and hold Shift, then tap select another track. All tracks between the two are selected.

To select all tracks:

- 1 Tap Soft Keys.
- 2 If necessary, navigate to the first page of Soft Keys by tapping Prev until the Option Soft Key is displayed.
- 3 Tap and hold Option, then select any track.

To deselect a track:

- Double-tap the track (Pro Tools only).
– or –
- Tap and hold the Command Soft Key, then tap the currently selected track.

To deselect all selected tracks:

- Double-tap any track (Pro Tools only).
– or –
- Tap and hold the Option Soft Key, then tap the currently selected track.

To select non-adjacent tracks (add to a selection):

- Double-tap any track (Pro Tools only).
– or –
- 1 Select any track.
- 2 Tap and hold the Command Soft Key and tap any other tracks.

Adjusting Track Volume and Pan

You can adjust track volume from the Mixer or the Tracks view. You can adjust track pan from the Mixer view only.

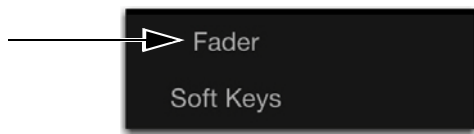
Adjusting Track Volume

To adjust track volume in Mixer view:

- 1 Bank to the desired track.
- 2 Touch the desired fader and slide vertically.

To adjust track volume in Tracks view:

- 1 Tap Tracks.
- 2 Tap a track tile.
- 3 Tap Fader.



Mono (left) and stereo (right) track pan sliders

- 4 In the Fader pop-up, touch the fader and slide vertically.
 - 5 Tap another track tile to adjust its level.
- or –
- Tap Fader again to close the Fader pop-up.

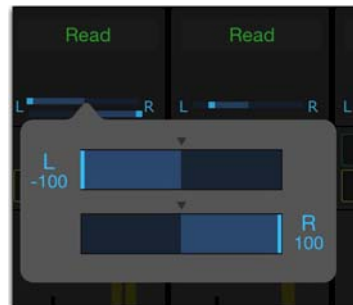
To reset a track's fader level to default (0 db):

- Double-tap a fader cap.

Adjusting Track Pan

To adjust track pan on a track:

- 1 Tap Mixer.
- 2 Bank to the desired track.
- 3 Touch a track pan indicator.
- 4 In the Pan Control pop-up, touch a pan control and slide it horizontally to adjust the pan. Stereo tracks provide two pan controls.



The Pan Control pop-up showing mono (left) and stereo (right) track pan controls

To reset track pan:

- In the Pan Control pop-up, double-tap a pan control. Pan is reset to 0 (center) for a mono track, and to -100 (fully left) and +100 (fully right) for a stereo track.

Recording Tracks

You can record-enable tracks and initiate a recording using the Control app.

Record-Enabling Tracks

You can record-enable tracks from the Mixer and Tracks views. A track must have a valid hardware input to be record-enabled.

💡 *For Pro Tools, make sure to enable the Latch Record Enable Pro Tools Preference (Preferences > Operation > Record) so you don't have to hold the Shift key to record enable additional tracks.*

To record-enable tracks in Mixer view:

- 1 Tap Mixer.
- 2 Bank to the desired track.
- 3 Tap the record-enable button for each track you want to record to. The fader cap for each record-enabled track lights red and the record enable button blinks red.



Record-enabled tracks in Mixer view

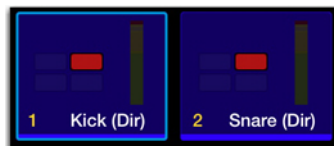
To record-enable tracks in Tracks view:

- 1 Tap Tracks.
- 2 Bank to the desired track.
- 3 Tap the RECORD track function button so it is highlighted



Enabled RECORD track function button

- 4 Tap the track tiles for the tracks you want to record to. The record-enable indicator for each track blinks red.



Record-enabled track tiles in Tracks view

To record enable all tracks:

- Touch and hold the Option Soft Key, then tap the record-enable button (Mixer view) or the track tile (in Tracks view with the Record track function button enabled).

Initiating a Recording

You can initiate a recording using the Control app's transport controls

To initiate recording

- 1 Tap Transport to show the transport controls.
- 2 Tap the Record Arm button in the Transport. The button flashes red in the Control app and in Pro Tools.



Transport showing the Record Arm button enabled

- 3 Tap the Play button in the Transport to start recording. The Play and Record buttons light solid in the Control app and in Pro Tools.



Transport showing Recording engaged

- 4 To stop recording, tap the Stop button in the Transport. The Stop button lights blue in the Control app.
- 5 To disarm the transport, tap the Record button so it is unlit.

Customizing Soft Keys

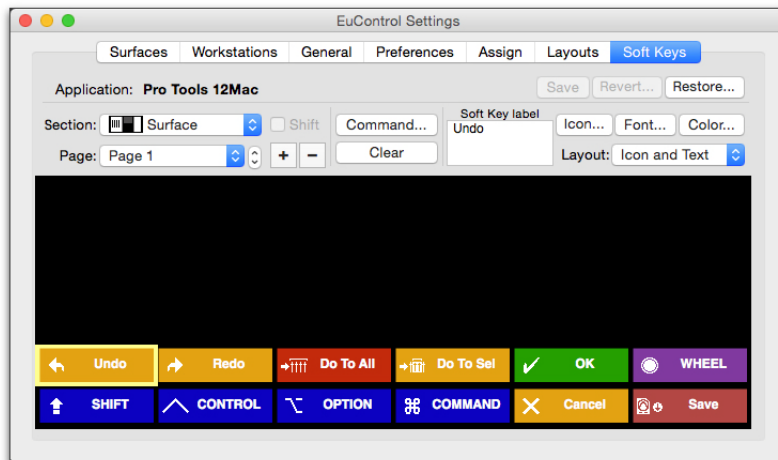
The Control app provides multiple pages of default Soft Key assignments when used with Pro Tools or other EUCON-aware applications. Each page has 12 Soft Keys slots. Using EuControl software, you can **reassign existing Soft Keys**, or, if you want to keep the default assignments, you can find a blank slot and **add your own**. You can also **undo** assignments.

⚠ *The Control app and Artist Control share Soft Key assignments, so changes to Soft Key assignments for the Control app affect any existing Artist Control Soft Key assignments, and vice-versa.*

Viewing Soft Key Assignments in the Soft Key Editor

To view assignments in the Soft Key Editor:

- 1 Launch Pro Tools and confirm that EuControl is connected to the Control app, indicated by a lit EuControl icon in the Menu Bar (Mac) or the System Tray (Windows).
- 2 Click the EuControl icon on the Menu bar (Mac) or double-click the EuControl icon in the system tray (Windows), then select EuControl Settings.
- 3 In the EuControl Settings window, click the Soft Keys tab.
- 4 Click the Section selector and choose Surface. The Soft Keys currently assigned to the first page of Soft Keys on the Control app are shown.



EuControl Settings Soft Keys tab showing the first page of Soft Keys assignments

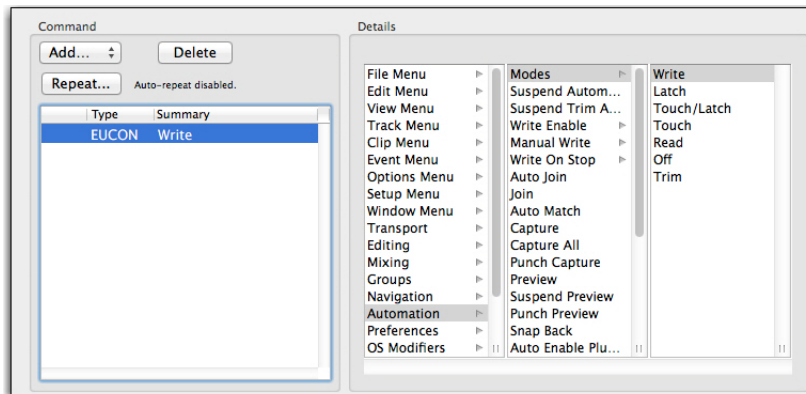
- 5 To view other pages of Soft Keys, click the Page selector and choose another page from the pop-up menu.
 - On pages with Soft Keys already assigned, you can **reassign these Soft Keys**.
 - On pages with blank Soft Key slots, you can **add new Soft Key assignments**.

Reassigning a Soft Key

You can reassign a Soft Key from its default assignment.

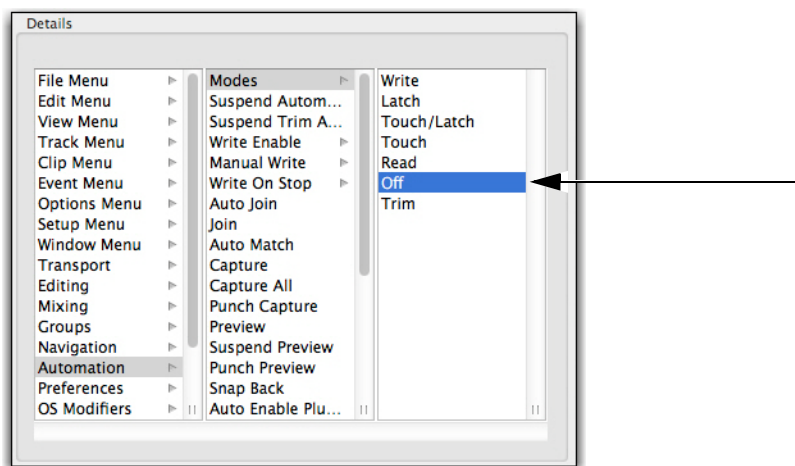
To reassign a Soft Key for Pro Tools:

- 1 Launch Pro Tools and confirm that EuControl is connected to the Control app.
- 2 Click the EuControl icon on the Menu bar (Mac) or double-click the EuControl icon in the system tray (Windows), then select EuControl Settings.
- 3 Click the Soft Keys tab.
- 4 Click the Section selector and choose Surface.
- 5 Click the Page selector and choose the page that contains the Soft Key you want to reassign.
- 6 Double-click the switch you want to reassign. The Soft Key Command Editor window opens, showing the switch's current assignment.




Soft Key Command Editor

- 7 To reassign the currently selected Soft Key, click a different command. For example, click Off in the third (right-most) list in the Details area. You can also click to make a new selection in the first (left-most) or middle Details list (such as File Menu, Edit Menu, and so on) to access other choices, as available.



A new assignment shown in the Command Editor

- 8 Close the Soft Key Command Editor and return to the EuControl Settings window.
- 9 Click the Save button in the Soft Keys tab to save the assignments. The next time you launch EuControl, your custom assignments are recalled.

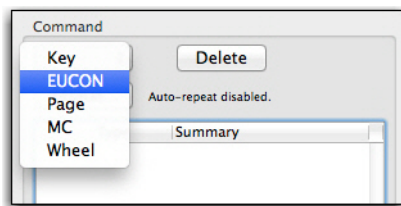
 If you do not save assignments, EuControl software retains your assignments until you Quit (Mac) or Exit (Windows) the EuControl application. EuControl then recalls the default Appset the next time you launch EuControl.

Adding a New Soft Key Assignment

You can add a new Soft Key assignment to a blank Soft Key.

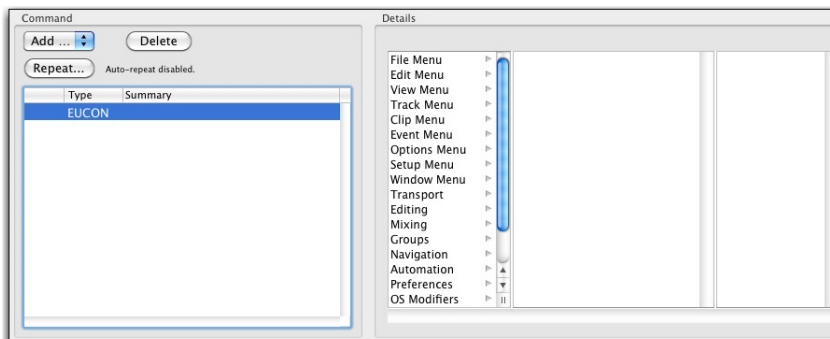
To add a new assignment:

- 1 Launch Pro Tools and confirm the EuControl is connected to the Control app.
- 2 Click the EuControl icon on the Menu bar (Mac) or double-click the EuControl icon in the system tray (Windows), then select EuControl Settings.
- 3 Click the Soft Keys tab.
- 4 Click the Section selector and choose Surface.
- 5 Click the Page selector and choose the page that contains the Soft Key you want to assign.
- 6 Double-click the Soft Key to which you want to add an assignment.
- 7 In the Command area, click Add and choose EUCON.



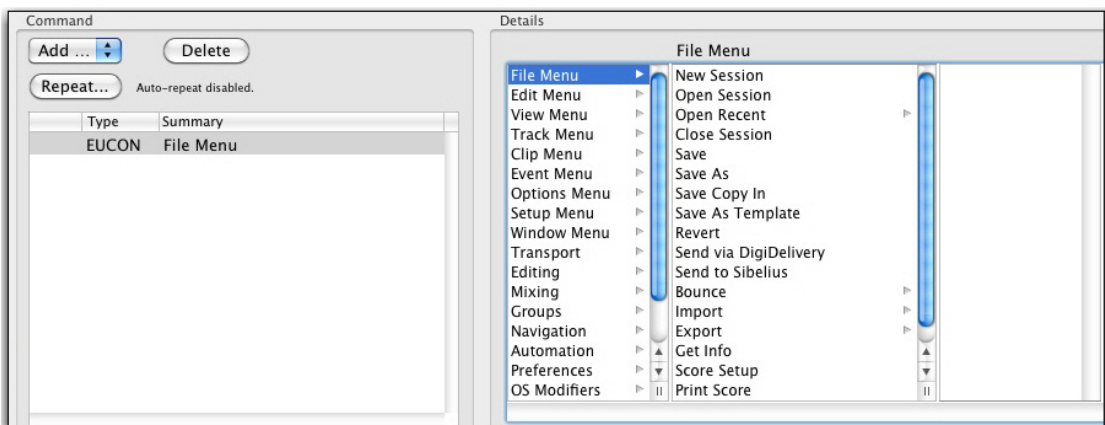
Adding a new EUCON command

After you add a EUCON command, choices appear in the Details area.



The Details area showing commands

- 8 Click an item in the left-most list (level 1) within the Details area to reveal associated commands in the middle column.



An item selected in Level 1 (the first column) of the Details area

- 9 Click a command to assign a command, or click an item with an arrow to reveal more commands in the third column and assign as necessary.
- 10 Close the Soft Key Command Editor and return to the EuControl Settings window.
- 11 Click the Save button in the Soft Keys tab to save the assignments.

Undoing Soft Key Assignments

If you've made changes to Soft Key assignments, the Soft Key Editor gives you the option to revert (undo) all Soft Key assignments since the last time you saved your assignments, and restore Soft Key assignments to factory default assignments.

To revert (undo) all assignments:

- Click the Revert button in the Soft Keys tab.

To restore assignments to their factory defaults:

- Click the Restore button in the Soft Keys tab.

Adding a Custom Key Command

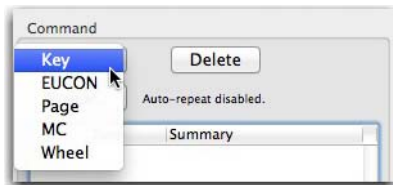
You can invoke a keyboard shortcut that has no pre-defined function in EuControl using the Soft Key Editor. The following workflow shows how to assign the Pro Tools shortcut for halving the length of an Edit selection (Command + Control + Option + Shift + Left Arrow on Mac, and Ctrl + Alt + Start + Shift + Left Arrow on Windows) to a Soft Key on the Control app.



You can use the Pro Tools Shortcut Guide to find the relevant Pro Tools shortcuts for your operating system.

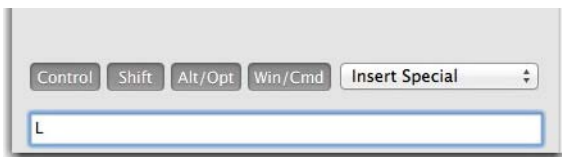
To assign a custom key command:

- 1 In the Soft Key Editor, do the following:
 - If the Soft Key already has an assignment, select the assignment in the Command list then press Delete.
 - Click Add and choose Key.



Choosing Key from the Add pop-up menu

- 2 In the Details area, select Control, Shift, Alt/Opt, and Win/Cmd, then enter "L" in the field below.



Details area of the Soft Key Command Editor



To insert special keyboard characters in the field such as a Function key or an arrow key, use the Insert Special menu.

- 3 Close the Soft Key Command Editor and return to the EuControl Settings window. Now, pressing the assigned switch halves the length of the current Edit selection in the Pro Tools Edit window.
- 4 Click in the Soft Key Label field and enter a name for the Soft Key assignment.
- 5 Click the Save button in the Soft Keys tab to save the assignment.

Managing Layouts

You can recall custom Layouts created for your S3 or Artist Mix controller from the Control App using the Track Type and Layouts button. However, you cannot create Layouts when using the Control app standalone. For Layouts to function correctly with the Control app, make sure to name each Layout, and make sure to create a default Layout that contains all tracks in the session.

Naming a Layout

To name a Layout:

- 1 Launch Pro Tools and open your session.
- 2 Click the EuControl icon on the taskbar (Mac) or double-click the EuControl icon in the system tray (Windows), then select EuControl Settings.
- 3 Click the Layouts tab.
- 4 In the Layouts list, double-click the Layout you want to name, and enter the name.
- 5 Click Store. The Layout information is stored with your session, and the properly named Layout will appear in the Layouts pop-up menu of the Control app.

Creating a Default Layout

To create a default Layout, your S3 or Artist Series Controller must be connected to your workstation computer.

To create a default Layout:

- 1 Make sure your S3 or Artist Series controller is connected to EuControl on your workstation computer.
- 2 Launch Pro Tools (or another application) and open your session.
- 3 Click the EuControl icon on the taskbar (Mac) or the System tray (Windows), and select EuControl Settings to open the EuControl Settings.
- 4 Click the Assign tab and make sure Pro Tools (or your other targeted application) appears next to Application. The controller's channel strips appear in the Strip column, and tracks assigned to each channel strip appear in the Assigned To column.



You can also press Surface SHIFT + a channel Sel switch to automatically open the Assign tab of EuControl Settings.

- 5 Make sure all strips say <auto assigned> in the Assigned To column. If any are not, click the displayed name in the Assigned To column and choose <auto assigned>.
- 6 Click the Layouts tab, and double-click the first layout in the list, type in a name such as "All," then press Enter.
- 7 Making sure row 1 is still highlighted, click Store. The Layout information is stored with your session, you can access the default Layout in the Layouts pop-up menu of the Control app whether or not your S3 or Artist Series controller is also connected.

EuControl

EuControl is launched automatically upon starting your computer and runs in the background. EuControl is responsible for finding, linking, and communicating with all Avid media controllers on the network.

Accessing EuControl Settings

To open the **EuControl Settings** window, do one of the following:

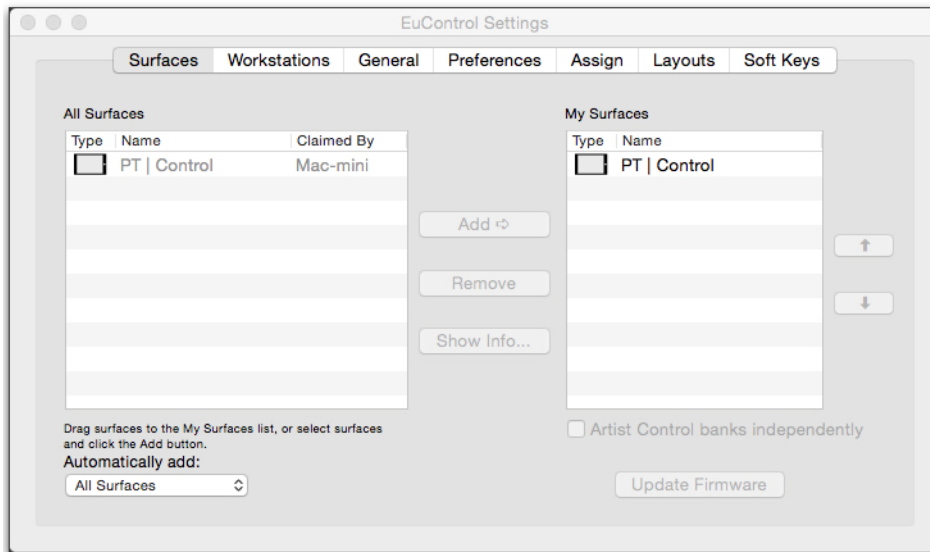
- On Mac, click the EuControl icon on the taskbar and select **EuControl Settings**.
- On Windows, double-click the EuControl icon in the system tray and select **EuControl Settings**. If you don't see the EuControl icon, it could be automatically hidden by Windows. Click on the small white arrow to show hidden icons, then double-click the EuControl icon.

Only one instance of EuControl can run on a workstation. However, multiple workstations on a single network can each run EuControl. Each EuControl-equipped workstation can connect one instance of the Control app on the network.

In this chapter, the tabs in the EuControl software are discussed in the order (left to right) as they appear at the top of the EuControl Settings dialog.

Surfaces

The Surfaces tab shows all EUCON controllers on your network and those connected to your instance of EuControl.



Surfaces tab

All Surfaces

All Surfaces shows all Avid media controllers on the network. A device shown in light gray is already connected either to your own or another instance of EuControl running on a different workstation. In both cases, it is not selectable.

My Surfaces

My Surfaces shows the media controllers connected to your instance of EuControl. Each media controller can be renamed by double-clicking the existing name and typing a new name.

Add

Click **Add** to add the selected All Surfaces entry to My Surfaces. This connects the selected Avid media controller to your instance of EuControl. You can also click and drag an Avid media controller from All Surfaces to My Surfaces.

Add is disabled if all media controllers in All Surfaces are connected to any instance of EuControl.

Remove

Click **Remove** to remove the selected surface from My Surfaces and make it available to other instances of EuControl.

Remove is disabled if no surface is selected.

Automatically Add

The Automatically Add menu has two settings that control what happens to stored Surfaces between shutdown and startup.

All Surfaces (Default)

This setting is best used when you are the only person running EuControl in your home or studio. It provides an easy plug-and-play experience by automatically adding your All Surfaces list to your My Surfaces list so you never have to manually edit the My Surfaces list.

My Surfaces Only

This setting is useful in facilities where other EuControl users are on your network. When EuControl starts, only the surfaces from your My Surfaces list are added. Because a surface can only be claimed by one user at a time, this avoids claiming another user's surfaces.

Update Firmware

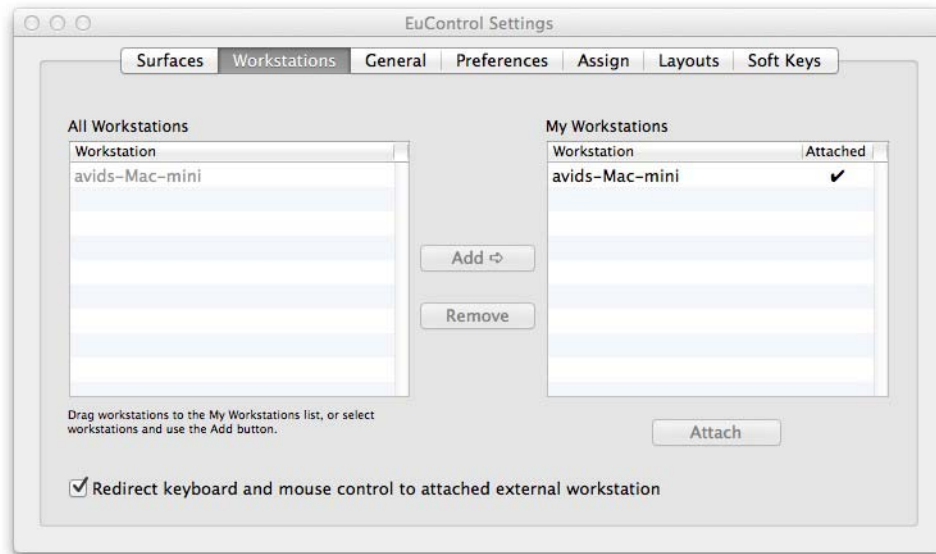
This feature does not apply to the Control app.

Show Info

Select a media controller and click **Show Info** to display the name of the unit, and hardware and software information.

Workstations

A media controller can control applications running on a second computer, referred to in this guide as a *workstation*. The Workstations tab establishes the list of workstations that the **Workstation** switch on an Avid control surface cycles through. Any workstation running EuControl software can be in this list, including those controlled by the System 5-MC, MC Pro, Artist Control, and S3.



Workstations tab

All Workstations

All Workstations lists all EUCON-enabled workstations on the network. If the workstation is already in the My Workstations list, it is shown in gray and cannot be selected.

My Workstations

My Workstations lists the workstations that can be attached to by pressing the **Workstation** switch (**Surface SHIFT + Application/Workstation**).

It is possible to put a workstation in the My Workstations list that is already attached to another instance of EuControl running on another computer. It cannot be attached here until it is unattached from the other instance of EuControl. This allows multiple users to share workstations without having to frequently edit their My Workstation list.

Add

Click Add to add the selected workstation from the All Workstations list to the My Workstations list. If the workstation is already in the My Workstations list, it is grayed out and cannot be selected.

Remove

Click Remove to remove the selected workstation from the My Workstations list.


Attach/Detach

Select a workstation in the My Workstations list and click **Attach**. A check mark appears in the Attach column next to that workstation. This workstation is now communicating with the media controller(s) connected to your instance of EuControl.

If the selected workstation is already attached, the button displays **Detach**. Click it to detach the workstation.

Redirect Keyboard and Mouse Control to Attached External Workstation

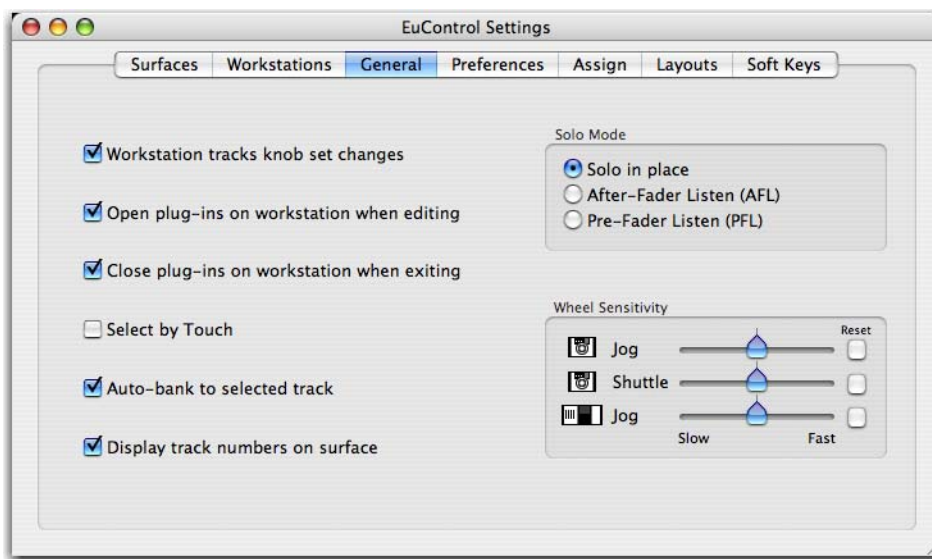
Your computer keyboard and mouse can control a second external workstation, if desired. Select this option before adding a workstation to the My Workstations list to redirect keyboard and mouse control to the attached workstation. Note that the keyboard and mouse will no longer control your primary workstation. If this option is not selected (default setting), your keyboard and mouse control your primary computer.

 You can manually toggle control back and forth between your primary workstation and the attached external workstation by pressing **Control + Option + ** (Mac) or **Control+Alt+** (Windows).

The Redirect Keyboard and Mouse Control to Attached External Workstation option must be checked *before* adding the workstation to the My Workstations list. If it is toggled ON after adding the workstation it will have no affect. Only workstations added with the option checked will respond.

General

The General tab lets you control how the Control app and the media application work together.



General tab

Workstation Tracks Knob Set Changes

This feature does not apply to the Control app.

Open Plug-ins on Workstation When Editing

This feature does not apply to the Control app.

Close Plug-ins on Workstation When Exiting

This feature does not apply to the Control app.

Select by Touch

When this command is enabled, touching a fader in the Mixer view of the Control app selects/attentions the track.

Auto-bank to Selected Track

When this is selected, the Control app banks to tracks when the tracks are selected on-screen. The surface will auto-bank such that the selected track appears on the leftmost fader of the surface as long as the selected track is not currently visible on the surface.

Display Track Numbers on Surface

When this is selected, the Control app shows track numbers as assigned by the current workstation (if supported) in the channel displays.

Solo Mode

These setting let you configure S3 for the following Solo modes as (if) available in the current workstation:

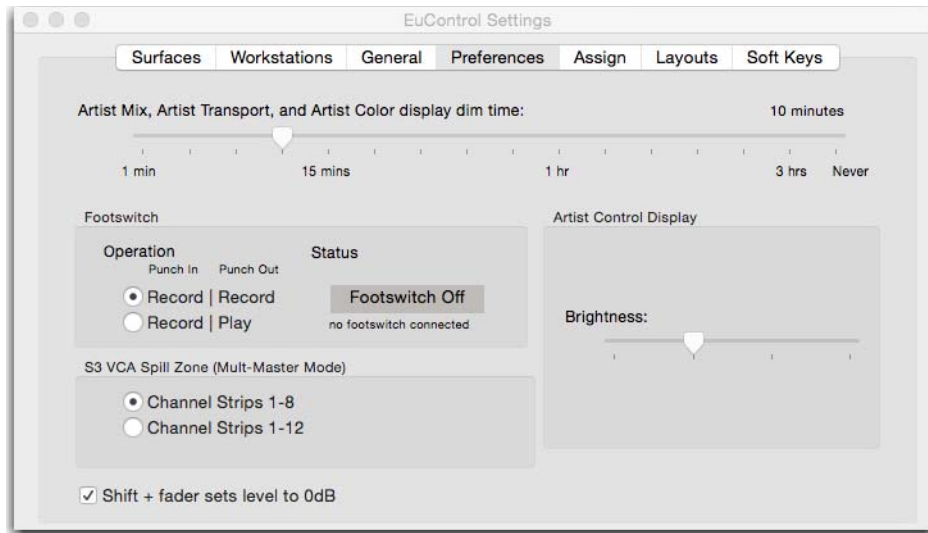
- Solo-in-Place
- After-Fader Listen (AFL)
- Pre-Fader Listen (PFL)

See the documentation for your specific workstation for details on Solo modes.

Wheel Sensitivity

These options are not applicable for the Control app.

Preferences



Preferences tab

Footswitch

This feature does not apply to the Control app.

S3 VCA Spill Zone

This feature does not apply to the Control app.

Shift + Fader Sets Level to 0dB

When enabled, holding **SHIFT** and touching a fader sets the fader to 0dB. **Surface SHIFT**-lock does not apply (**Surface SHIFT** must be pressed).

Artist Control Display

This feature does not apply to the Control app.

Display Screen Dim Time

This feature does not apply to the Control app.

Assign

The Assign tab lets you manage how tracks are assigned to S3 or Artist Mix fader strips. Only Lock to Application is applicable to the Control app if you are using the app standalone.

Display Application's Track Numbers

Enabling this option lets EuControl display track numbers as assigned by the currently selected (in focus) application (if that application supports track numbers).

Clear All Assignments

Clears all currently displayed assignments.

Lock to Application

This feature lets currently connected surfaces stay locked to the application listed at the top-left of the dialog even when that application is not top-most.

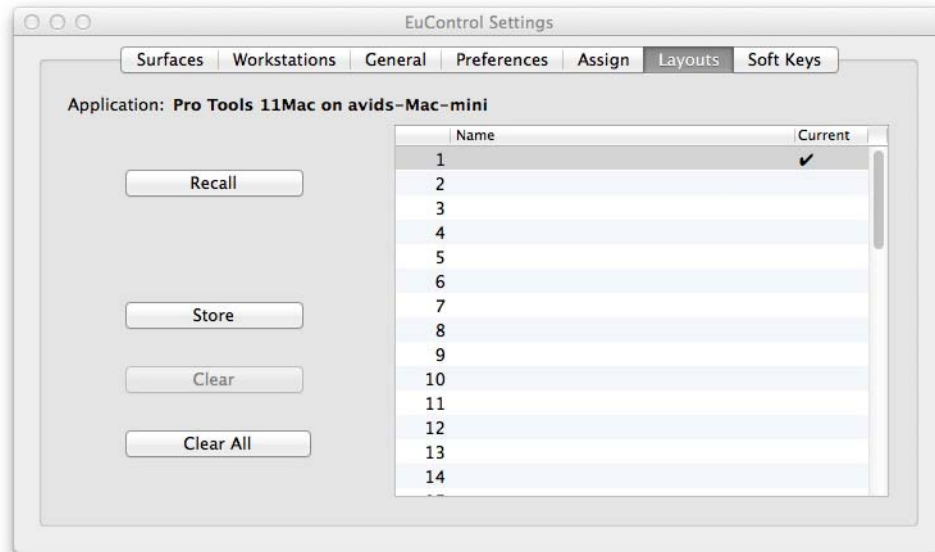
Entire Surface Select this checkbox to lock any currently connected surfaces to the listed application.

Transport Select this checkbox to lock the transport controls of any currently connected surfaces to the listed application.

Monitor and Control Room Not applicable for the Control app.

Layouts

Use the Layouts tab recall and rename custom fader layouts created on S3 or Artist Mix. You can also Clear selected Layouts, and Clear all Layouts. See [Managing Layouts](#) for more information.



Layouts tab



Layouts are created and temporarily stored in EuControl as long as the current session or project is open. To be able to recall your layouts, be sure to save your session or project in your workstation application.

Soft Keys

The Soft Keys tab provides options for viewing, editing, and creating new Soft Key assignments for Avid media controllers. For information on using Soft Keys with the Control app, see [Customizing Soft Keys](#).

Restart EUCON Applications

If you are having trouble connecting your surface to your DAW, use the Restart EUCON Applications command.

To restart all EUCON applications (including EuControl software):

- On Mac, click the EuControl icon on the taskbar and select **Restart EUCON Applications**, then click **Yes**.
- On Windows, click the EuControl icon in the Task or System tray (Windows) and select **Restart EUCON Applications**, then click **Yes**. Unused icons will be shown in the Hidden icons view.

All EUCON applications are restarted, including EuControl.



Avid
280 N Bernardo Avenue
Mountain View, CA 94043 USA

Technical Support (USA)
Visit the Online Support Center at
www.avid.com/support

Product Information
For company and product information,
visit us on the web at www.avid.com